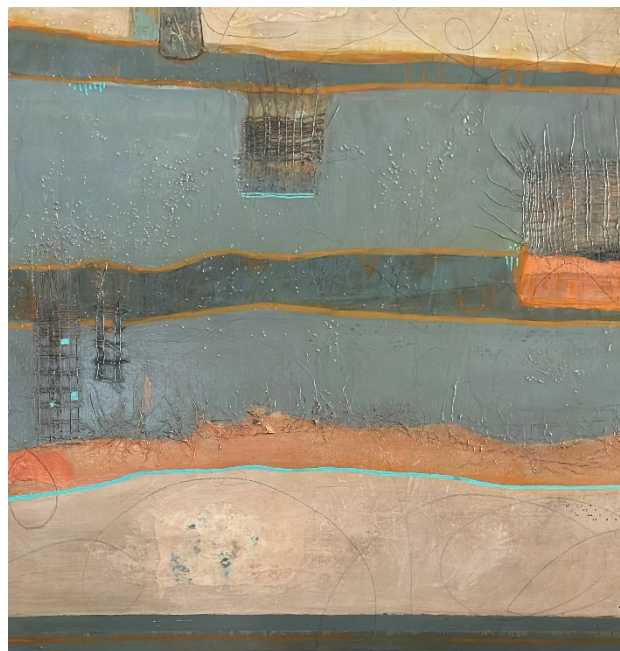


OUR ART OUR REGION OUR TIME



Primitive Rhythm

30 x 30 plus 1/2 "frame
acrylic mixed media painting
\$1500

Kathleen Siegfried

www.artistsnwarkansas.com/artists/kathleen-siegfried-2/

Bio

During over thirty years as an English teacher and administrator in Ohio and New Jersey, Kathleen Siegfried encouraged her students to discover connections between the expressive powers of art and literature. A huge print of Chagall's Half Past Three (The Poet) was a focal point in her classroom and later in workshops for English/language arts teachers. Georgia O'Keeffe's Music--Pink and Blue was a frequently used resource for creative writing.

Midway through her life and career she could no longer resist the urge to pick up a brush. Encouraged by a number of artist/teachers, she developed competence with watercolor. When she retired and moved to Northwest Arkansas eleven years ago, she was excited to find a vibrant arts community that has encouraged her ongoing growth. She joined Mid-South Watercolorists in Little Rock, studied for eight years at Studio Seven in Rogers, and took courses at ESSA (Eureka Springs School of the Arts). Painting primarily in acrylic now, she is a represented artist at Art Ventures in Fayetteville. A member for over ten years of ANA (Artists of Northwest Arkansas), she now serves on the ANA Board of Directors and is a Gallery Artist at ANA Gallery in Rogers.

Artist Statement

Especially drawn to abstract art and the challenges of abstraction, I am intrigued by the integration of mixed media materials into my acrylic paintings. I like to consider myself an experimental artist and an intuitive painter. So, I often begin with color rather than subject matter, allowing the colors and textures to show me where the painting will go. Recent work has evolved from an earlier focus on landscapes and seascapes. I use abstract forms and collage in my acrylic paintings, which are typically layered with decorative papers that become part of the textural underpinning of the work. Using a limited palette, I imply land and sea forms or suggest totally abstract concepts. Full details are left to the viewer's imaginative interpretation. All paintings are multi-layered and gloss-finished for a photographic effect. For me, the fun comes first as the work emerges and later as I talk to viewers about what they see.