

OUR ART OUR REGION OUR TIME

She Breathes With Trees

48 x 60 inches

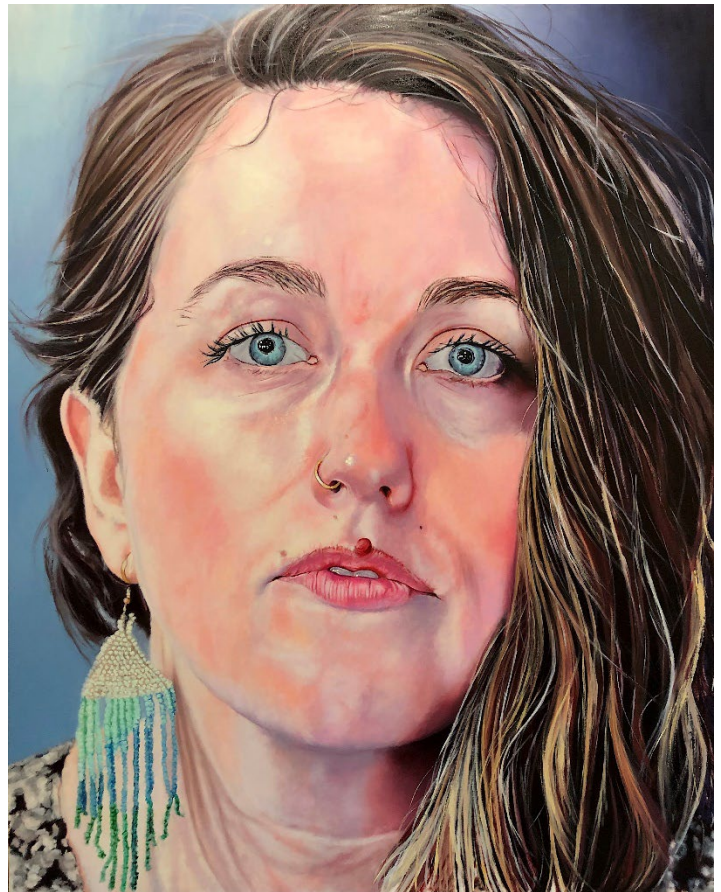
painting

\$5200

Ray Allen Parker

www.rayparkerart.com

@rayaparker



Bio

Ray Allen Parker was born in San Diego and grew up in U.S. Navy towns from California to Florida, Hawaii and Washington before the family finally settled in rural Egypt, Arkansas. He earned a B.A. and an M.A. in English from the University of Arkansas, where he also took his first painting class. Following a three-decade career in retail communications and advertising, Ray returned to art and his lifelong interest in painting. Through large-scale works that strive to be both old masterly and contemporary, he explores the complex topography of the human face and figure. Ray lives and works in Fayetteville, Arkansas, with his wife Mary Jean.

Ray's paintings have been selected for numerous national and international exhibitions, solo shows, publications, interviews and private collections. On three occasions his work has been exhibited in the prestigious Annual Delta Exhibition at the Arkansas Museum of Fine Arts. In 2018 his work was chosen for the Contemporaries Award at the Delta Exhibition. He has also received the Individual Artist Fellowship Award for painting from the Arkansas Arts Council. In 2021, his work *Altarpieces* and *Icons* was the inaugural exhibition at the Windgate Museum of Art at Hendrix College in Conway, AR, accompanied by artist lecture, exhibition catalog and art-historian presentation.

Artist Statement

I believe in heroic paintings. I create larger-than-life, oil-on-canvas works that explore the faces and figures of friends, family and fellow artists. I want my paintings to be bold but intimate, naturalistic but expressive, dense but revealing. I try to capture people, not just depict them, in a convincing, painterly way that simultaneously renders paint both as arresting brush mark and as flesh. Like the contemporary painters who have most deeply influenced me — Jenny Saville, Odd Nerdrum, Lucian Freud, Gerhard Richter — I want my paintings to embody the person. Through a painstaking traditional process of surface preparation, drawing, painting & repainting, sanding, scraping and glazing, these portraits ask us to look beneath the layers of appearances, to peer into the portrayed faces and experience a panoply of shared and sometimes conflicting emotions. With their intimate scrutiny of surface and self, these works draw us close to their figures, much closer than we might care to be, granting us permission to stare intensely. In this way, my portraits reward slow looking. The impact of these large-scale paintings is to demand our attention and connect us to others, while revealing new insights about our own selves.