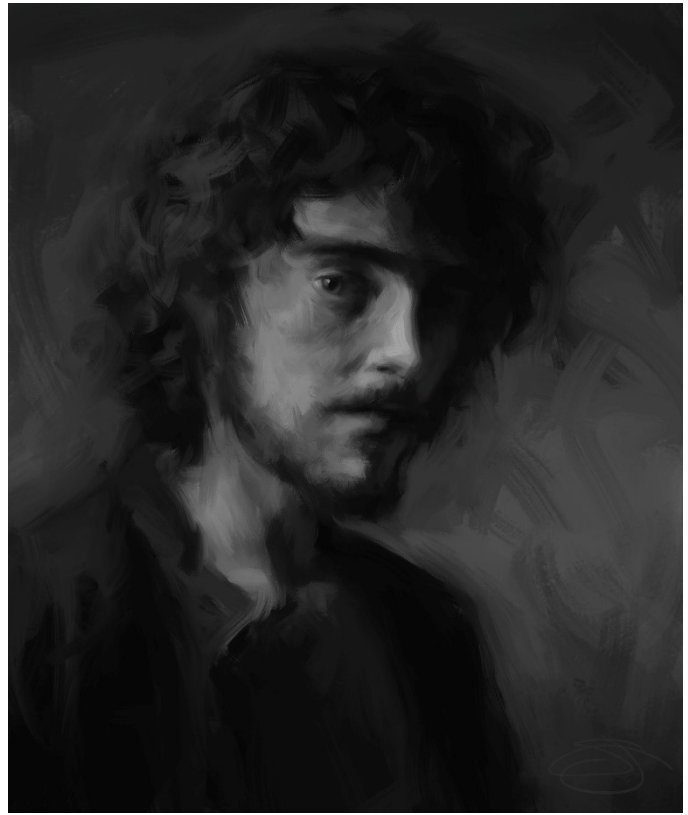




***Therapy***  
10 x 8 inches  
Digital  
NFS



***Mannequin***  
15 x 18 inches  
Digital  
NFS

## Sam Butler

### Bio

My art career started when the world ended. While the world went into lockdown, absurdity became normalcy. With lockdown came time, and an eerie stillness. I turned this peculiar predicament into time to explore new possibilities. I picked up art as a challenge to myself and a way to try and understand my complex emotions. For the next year, I poured myself into the world of art. Through the wealth of resources online and time on hand, I taught myself how to draw through quarantine.

### Artist Statement

Art should not just mimic reality, it should transcend it.