



Walton Arts Center



Today I am going to see a live performance at Walton Arts Center's Nadine Baum Studios.





Walton Arts Center



We will enter through the front door of the building.





Walton Arts Center



Everyone needs a ticket to get inside the theater. We may already have our tickets, we may have to buy them at the Box Office or our tickets may be waiting for us at Will Call.





Walton Arts Center

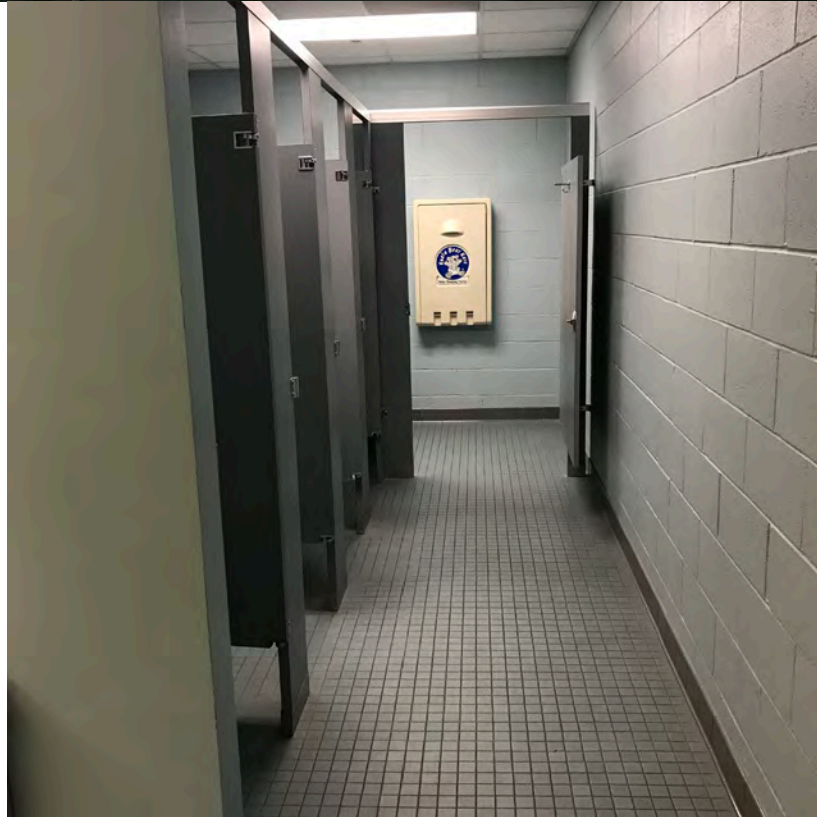


If we are not yet ready to find our seats, we can hang out in the lobby. The lights may dim or a chime may sound when it is time for the show to start.





Walton Arts Center



There are restrooms available if I need to use them.





Walton Arts Center



When we are ready to find our seats, we will go to one of the Studio Theater entrances.





Walton Arts Center



As we enter the hall, an usher will scan our tickets.





Walton Arts Center



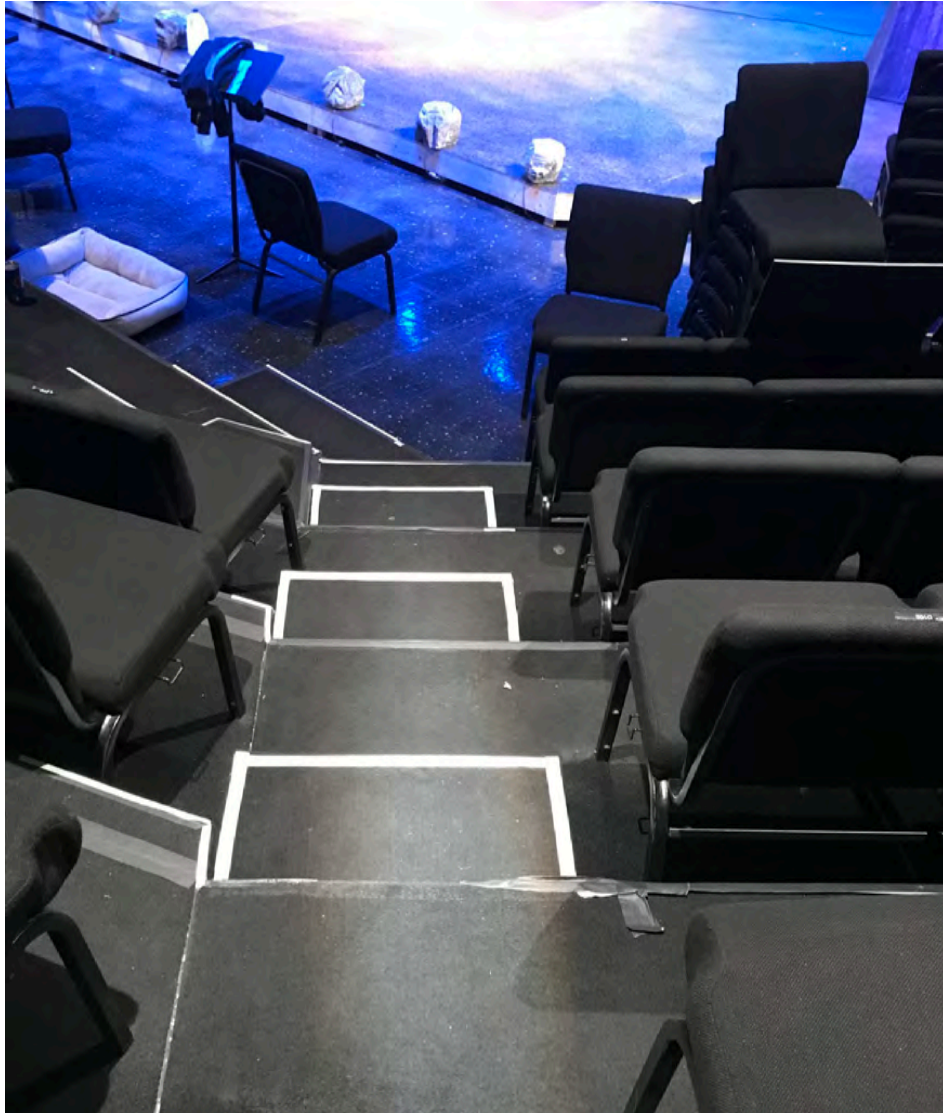
The inside of the Studio Theater is large and can seat a lot of people. Once inside, an usher will help us find our seats. The theater may be crowded and we may need to walk in front of people to find our seats.







Walton Arts Center



When the show is over, the lights will come back on and everyone will leave the theatre. The aisles may be crowded as everyone exits. I will wait my turn to use the aisle and exit through the doors.

For more information or assistance, please contact Sallie Zazal, Learning Coordinator:  
[szazal@waltonartscenter.org](mailto:szazal@waltonartscenter.org) or 479.571.2735

