



Walton Arts Center

Venue **Rentals**

2017/18

Venue Rental Rates

FACILITY	CAPACITY	SQUARE FOOTAGE	COMMERCIAL	NON-PROFIT	UNIVERSITY (10% off NP)
Baum Walker Hall	1201 Seating	8600	\$4,000 up to 8 hrs. \$300/additional hr.	\$2,500 up to 8 hrs. \$200/additional hr.	\$2,250 up to 8 hrs. \$180/additional hr.
Starr Theater	250 Retractable Seating 250 Banquet 525 Reception	3720	\$2,000 up to 8 hrs. \$1,000 up to 4 hrs. \$200/additional hr.	\$1,500 up to 8 hrs. \$750 up to 4 hrs. \$150/additional hr.	\$1,350 up to 8 hrs. \$135/additional hr.
Walmart Lobby	100 Reception	983	\$100/hr.	\$100/hr.	\$100/hr.
McBride Studio	175 Theater 75 Banquet 150 Reception	1112	\$100/hr.	\$100/hr.	\$100/hr.
Sudduth Garden Room	150 Theater 60 Banquet 120 Reception	988	\$120 for Sudduth Garden Room \$150 for SGR & Rose Garden	\$120 for Sudduth Garden Room \$150 for SGR & Rose Garden	\$120 for Sudduth Garden Room \$150 for SGR & Rose Garden
Bradberry Amphitheater (Rose Garden)	150 Theater 48 Banquet 200 Reception	2000	Sudduth Garden Room & Bradberry Ampitheater will be priced together		
Joy Pratt Markham Gallery	125 Reception	1736	\$90/hr.	\$90/hr.	\$90/hr.
Walker Atrium Lobby includes Pace Balcony	545 Theater 200 Banquet 600 Reception	4384	\$300/hr.	\$250/hr.	\$250/hr.
Pace Balcony Lobby	400 Reception 60 Banquet	1976	\$120/hr.	\$120/hr.	\$120/hr.
FOH Catering Kitchen	Kitchen fee applies when food is served		\$100/day	\$100/day	\$100/day

Event Staffing | 4 hr. minimum unless otherwise noted

STAFF	COMMERCIAL	NON-PROFIT	UNIVERSITY (10% off NP)
Security Personnel	\$25/hr.	\$25/hr.	\$25/hr.
Facilities Personnel	\$17/hr.	\$17/hr.	\$17/hr.
Audio/Video Technician	\$26.25/hr.	\$26.25/hr.	\$26.25/hr.
Front of House Personnel	\$21/hr.	\$21/hr.	\$21/hr.
Bartender	\$30/hr.	\$30/hr.	\$30/hr.
Damage Deposit	\$250-\$500		
Cleaning Fee	\$150-\$250		

Holiday Rate:
staffing & rates are double



2017/18

Approved **Caterers**



Contact: Jennifer Keaton

Phone: 479.750.8981

E-mail: jkeaton@kfbevents.com

Website: www.kfbevents.com



Contact: Hayley Mitcham

Phone: 479.750.4111 or 817.994.0790

E-mail: events@cateringunlimitednwa.com

Website: www.cateringunlimitednwa.com



Contact: Angelina Smith

Phone: 479.527.6865

E-mail: events.bordinos@gmail.com

Website: www.bordinos.com



Contact: Callie Flynt & Shane Bivin

Phone: 479.935.3771

E-mail: elitecateringnwa@gmail.com



Contact: Micah Blackmon

Phone: 479.236.2930

E-mail: micah.earlybird@gmail.com

Website: www.earlybirdcateringnwa.com



2017/18

Beverage Pricing

Beer | \$4

Bud Light (Can)
Fat Tire (Can)
Stella Artois (Can)
Ozark Beer IPA (Can)
Ozark Beer American Pale Ale (Can)

Cider | \$4

Stella Cidre (Bottle)

Premium Wine | \$8

Red: Dreaming Tree Crush
White: Skyfall Pinot Gris

House Wine | \$6

Red: Barefoot Merlot
White: Barefoot Chardonnay

Liquor | \$6

Vodka: Ketel One Vodka
Gin: Tanqueray
Rum: Bacardi
Whiskey: Jack Daniels & Crown Royal
Scotch Johnny Walker Black Label

Soda | \$3

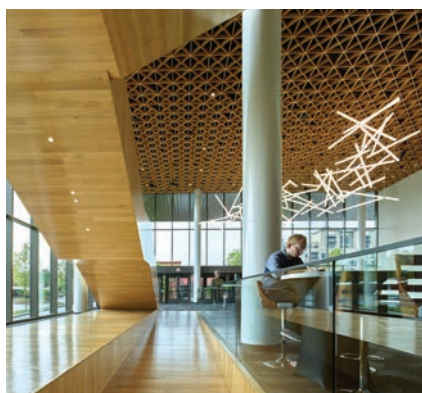
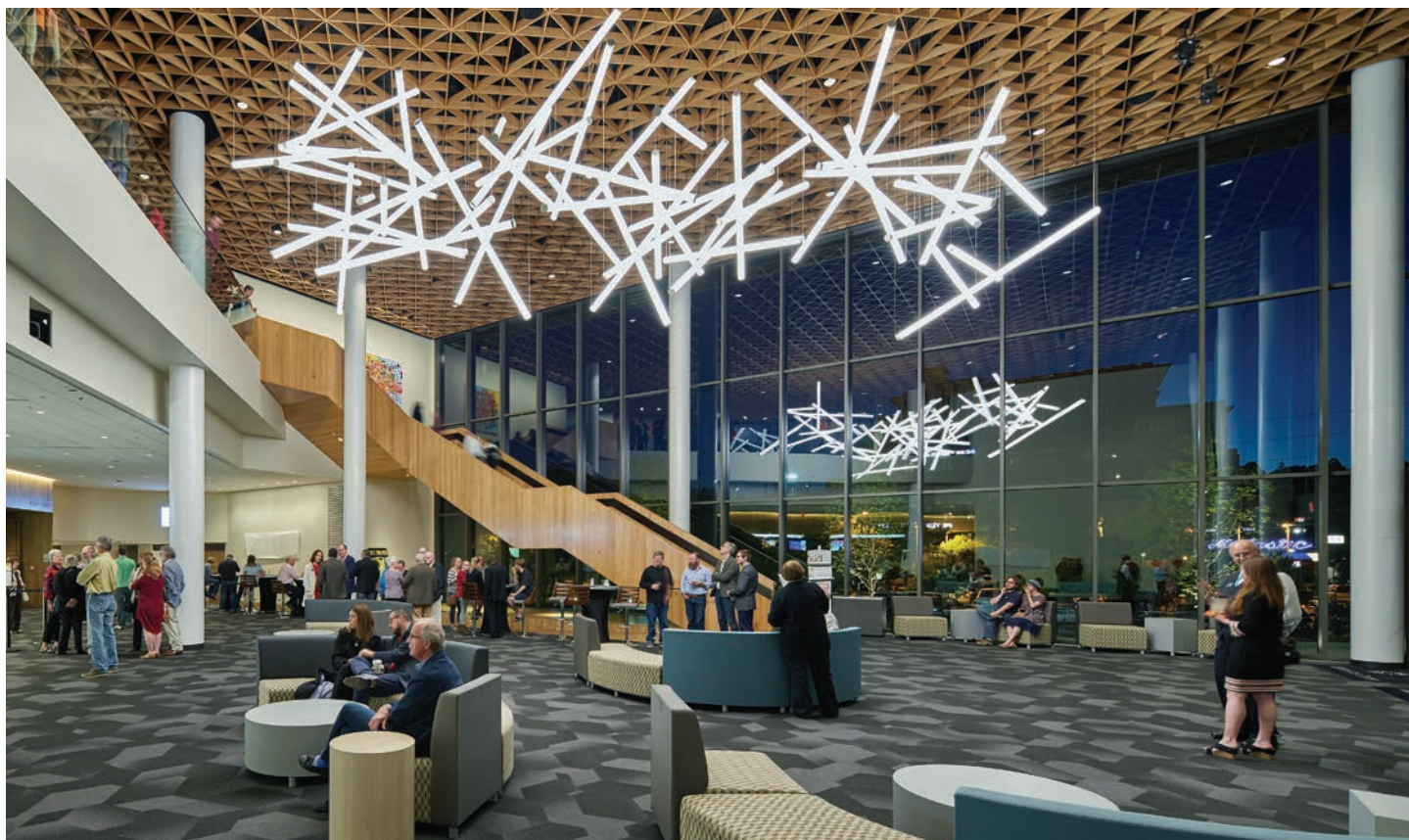
Coke
Diet Coke
Sprite
Dr. Pepper
Water Bottles

**Whirly Cups: +\$1.50 per drink



Walker Atrium / Pace Lobby

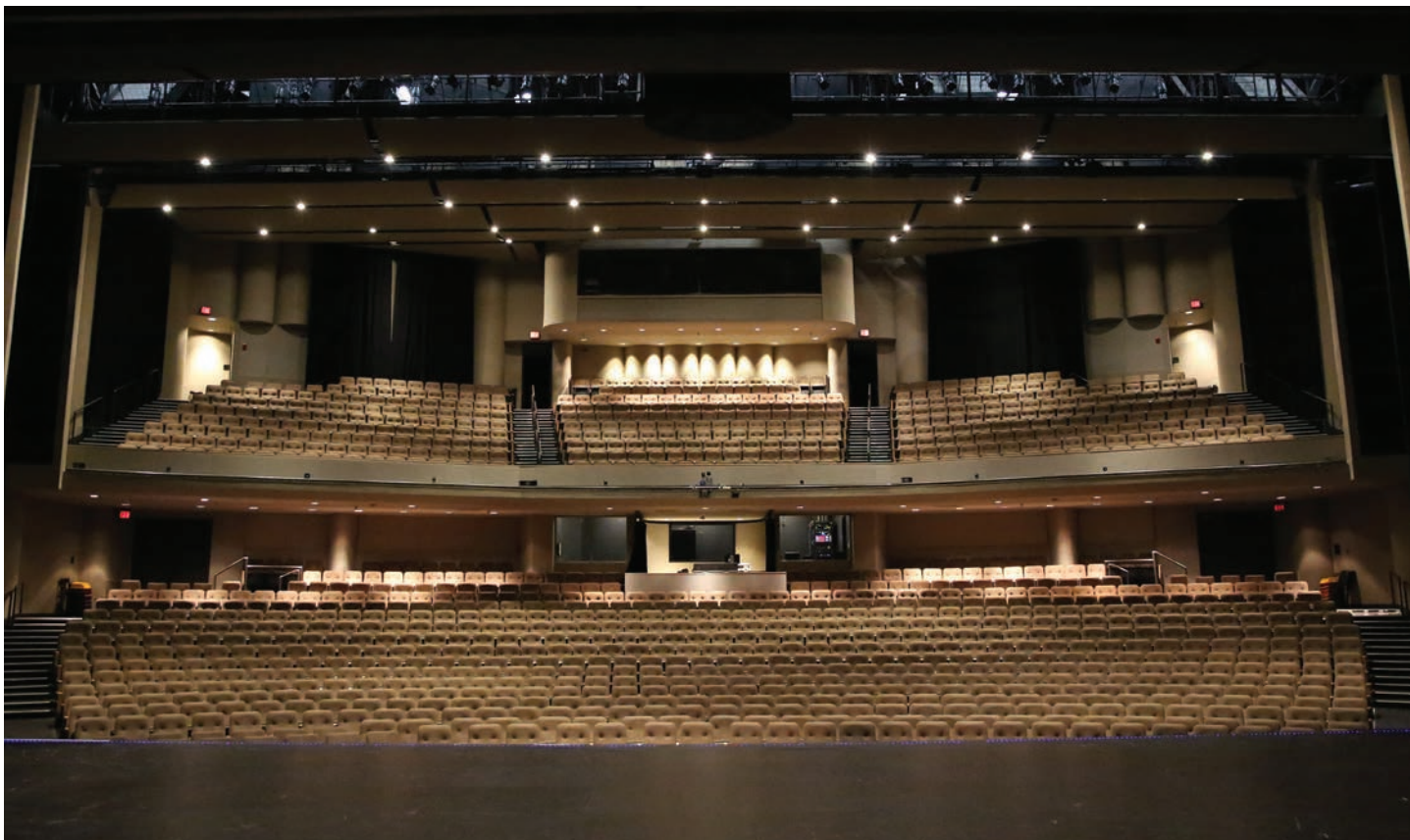
Space Details



CAPACITY	SQUARE FOOTAGE	COMMERCIAL	NON-PROFIT	UNIVERSITY (10% off NP)
545 Theater 200 Banquet 600 Reception	4384	\$300 /hr.	\$250 /hr.	\$250 /hr.

Baum Walker Hall

Space Details

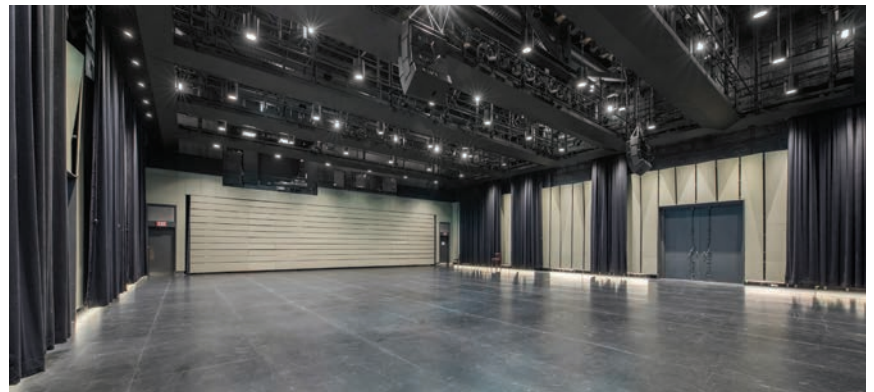


CAPACITY	SQUARE FOOTAGE	COMMERCIAL	NON-PROFIT	UNIVERSITY (10% off NP)
1201 Seating	8600	\$4000 up to 8 hrs. \$300/additional hr.	\$2500 up to 8 hrs. \$200/additional hr.	\$2250 up to 8 hrs. \$180/additional hr.



Starr Theater

Space Details



CAPACITY	SQUARE FOOTAGE	COMMERCIAL	NON-PROFIT	UNIVERSITY (10% off NP)
250 Retractable Seating	3720	\$2000 up to 8 hrs. \$1,000 up to 4 hrs. \$200/additional hr.	\$1500 up to 8 hrs. \$750 up to 4 hrs. \$150/additional hr.	\$1350 up to 8 hrs. \$135/additional hr.
250 Banquet				
525 Reception				

Walmart Lobby

Space Details



CAPACITY	SQUARE FOOTAGE	COMMERCIAL	NON-PROFIT	UNIVERSITY (10% off NP)
100 Reception	983	\$100 /hr.	\$100 /hr.	\$100 /hr.

McBride Studio

Space Details



CAPACITY	SQUARE FOOTAGE	COMMERCIAL	NON-PROFIT	UNIVERSITY (10% off NP)
175 Theater	1112	\$100 /hr.	\$100 /hr.	\$100 /hr.
75 Banquet				
150 Reception				

Sudduth Garden Room

Space Details



CAPACITY	SQUARE FOOTAGE	COMMERCIAL	NON-PROFIT	UNIVERSITY (10% off NP)
150 Theater	988	\$120 for Sudduth Garden Room	\$120 for Sudduth Garden Room	\$120 for Sudduth Garden Room
60 Banquet		\$150 for SGR & Rose Garden	\$150 for SGR & Rose Garden	\$150 for SGR & Rose Garden
120 Reception				

Bradberry Ampitheater/ Rose Garden

Space Details



CAPACITY	SQUARE FOOTAGE	COMMERCIAL
150 Theater	2000	Sudduth Garden Room & Bradberry Ampitheater will be priced together
48 Banquet		
200 Reception		



Joy Pratt Markham Gallery

Space Details



CAPACITY	SQUARE FOOTAGE	COMMERCIAL	NON-PROFIT	UNIVERSITY (10% off NP)
125 Reception	1736	\$90/hr.	\$90/hr.	\$90/hr.

Pace Balcony Lobby

Space Details



CAPACITY	SQUARE FOOTAGE	COMMERCIAL	NON-PROFIT	UNIVERSITY (10% off NP)
60 Banquet 400 Reception	1976	\$120 /hr.	\$120 /hr.	\$120 /hr.

Catering Kitchen

Space Details



CAPACITY	COMMERCIAL	NON-PROFIT	UNIVERSITY (10% off NP)
Kitchen Fee when Food is Served	\$100 /day	same rate	same rate