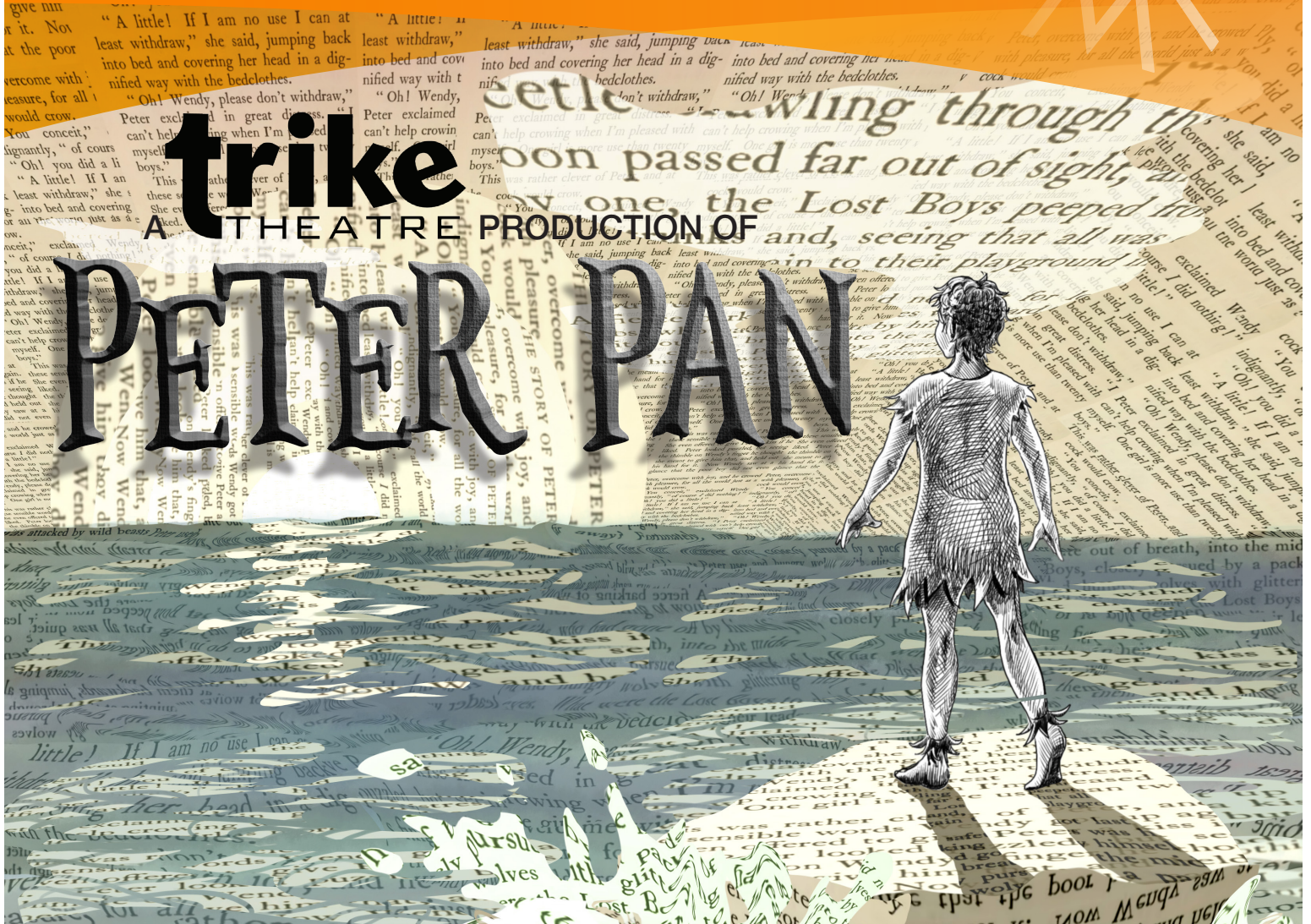
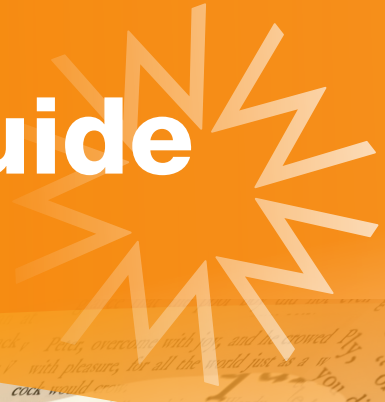




Walton Arts Center

Performance Guide



Ideas for Curriculum Connections

Arkansas Learning Standards: RL.1.1, RL.2.1, RL.3.1; RL.1.2, RL.2.2, RL.3.2; RL.1.3, RL.2.3, RL.3.3; RL.1.5, RL.2.5, RL.3.5; RL.1.6, RL.2.6, RL.3.6; SL.1.1, SL.2.1, SL.3.1; SL.1.4, SL.2.4, SL.3.4. Fine Arts Standards Theatre: P.4.1.1, P.4.2.1, P.4.3.1; R.7.1.1, R.7.2.1, R.7.3.1; R.8.1.1, R.8.2.1, R.8.3.1; R.9.1.1, R.9.2.1, R.9.3.1; R.9.2.3, R.9.3.3; CN.10.1.1, CN.10.2.1, CN.10.3.1. Theatre Appreciation: CR.1.TA.3; P.4.TA.1; P.4.TA.6; P.6.TA.1; R.7.TA.4.

Peter Pan, who comes to hear the stories Mrs. Darling tells each night, has lost his shadow. Tinker Bell, his fairy friend, helps him search, but it's Wendy Darling that re-attaches his shadow in trade for a kiss. Join Trike Theatre on a fantastic flight of adventure in this retelling of the classic tale of growing up.

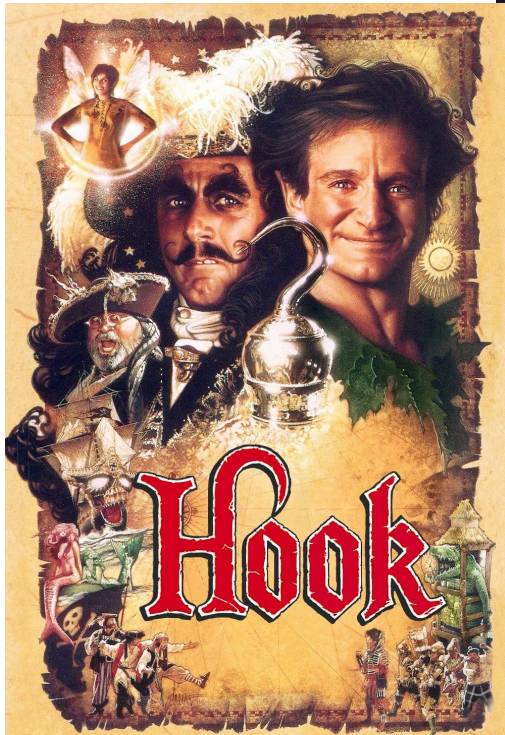


Photo credit: HDVIX

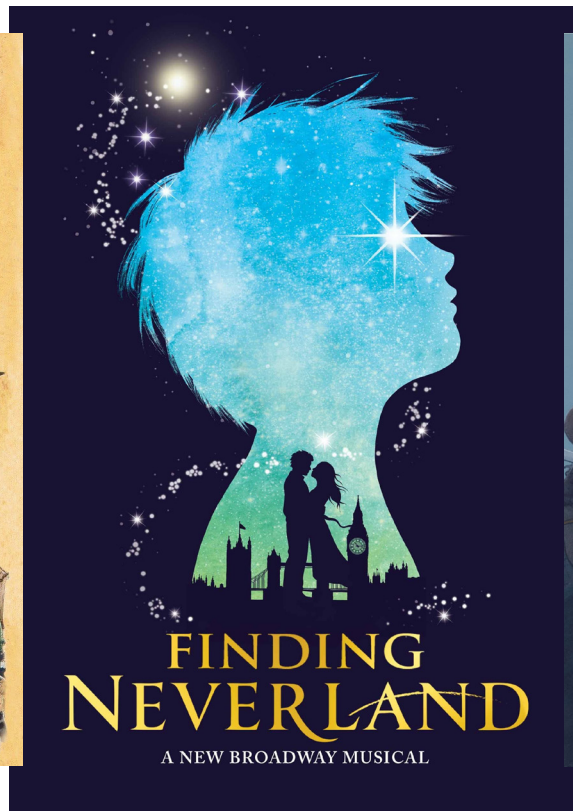


Photo credit: neilswaab.com



Photo credit: books.disney.com

The Show

Trike Theatre's unique production was adapted by Scottish playwright, Douglas Irvine from J.M. Barrie's Peter Pan books. In the show, Peter Pan, who visits at night to hear Mrs. Darling tell stories, has lost his shadow. His fairy friend, Tinker Bell, helps him look. However, it isn't until he meets Wendy Darling, that his shadow can be reattached in exchange for a kiss. From there, Peter Pan whisks Wendy and her brother, Michael, off to Neverland for fantastic adventures! In this production, you will see eight young actors (all from Northwest Arkansas) and 3 professional adult actors on stage. To make sure the young actors don't miss a bunch of school, there are two young actor casts (the Mermaid and Crocodile) who share the 26 performance schedule. Trike also uses shadow puppets to seamlessly bring the Neverland fun and danger to life.

The Company

Since 2008, when it opened its doors in Bentonville, AR, Trike Theatre has attracted a dedicated team of artists, educators, and staff who have 100+ years of experience working for professional Theatres across the country and overseas. As the only professional theatre for youth of its kind in Arkansas, Trike Theatre is a valuable resource for the community, a laboratory for new artistic ideas, and a home for many young artists who have found their voice. Its mission is to enrich and transform the lives of young

people through exceptional theatre experiences. Trike Theatre builds community via their Academy classes, productions, and partnerships, particularly as a Walton Arts Center Artist Affiliate. Trike Theatre encourages creativity via imagination, exploration, and the creation of valuable works. They cultivate courage by building empathy and self-confidence by supporting and inspiring their students and audiences alike.

Retelling Peter Pan

When students hear "Peter Pan," they may think of the Disney classic movie or J.M. Barrie's book, few may know that J.M. Barrie originally wrote Peter Pan as a play. Later, Barrie adapted his play to a book. Since then, the story of Peter Pan has been adapted for the screen, stage, and page numerous times. Some adaptations are more like sequels, such as the movie *Hook*, which explores grown-up Peter Pan, played by the late Robin Williams, returning to Neverland. Others reimagine the story as taking place in slightly different ways, such as the book *Peter and the Star Catchers* by Dave Barry and Ridley Pearson, where Peter and the Lost Boys are orphans aboard a boat called Never Land. Others, such as book, then popular movie, later turned Broadway musical, *Finding Neverland*, tell the story of the story by exploring the context in which the play was first written whilst incorporating elements of the original Peter Pan story. With each adaptation, different aspects of the Peter Pan story are highlighted.

Learning Activities

Mapping Neverland

Familiarize students with the Peter Pan story and explore their own Neverland.

Most students have probably encountered the Peter Pan story or characters from the Peter Pan story before.

Start the activity by asking students to list places they have heard of in Neverland and write their answers on the board.

Then ask them either individually or in groups of two to three to draw a map of Neverland

based on the places listed.

Ask them to include one or two additional sections of Neverland based on what they would want their very own Neverland to look like.

Production Design

The design concept for Trike's *Peter Pan* came from how books build worlds. The various scenes will reflect a color scheme of the book with lighting, projection, and set props, leaving the rest to the imagination.

Lighting -- How do different colors make you feel? How can you see similar effects with the use of different colors of light? For example, what's the difference between a scene at night and one during the day?

Projection -- What images are used? Are they stationary or moving? Are they colorful, dark, realistic, abstract, etc.? Do the images create a certain mood for the scene?

Set Props -- How does the furniture in the scene tell you where the scene is taking place? What does it look like, fancy or worn?

Story Adaptation

Based on the characters from Trike Theatre's *Peter Pan* have your students create stories, either in narrative form or as a play script, that take place in the new locations they added to their Neverland maps. Have your students share or perform their stories for the rest of the class.

Stage Design

On stage, locations are created by lighting, projection, the shifting of scenery, the placement of props, and the movement of actors.

- Briefly discuss what the students remember about the scenery and background from the show. Write their answers on the board.
- Show students examples of set design concept art. Some examples can be found by googling "concept art for peter pan stage design."
- Note the use of perspective in the concept art to make the concept art seem 3D.
- Have your students create a 3D drawing of a stage set based on the new locations they added to their Neverland maps.
- Additionally, you can have them use their drawings to create a 3D model of their concept art.

Blocking a Scene

Blocking is the process of the director working with the actors on how they should move across stage to convey the emotion and action in the moment while staying in the audiences' sightlines.

- Discuss how the movement in the play helped contribute to the story.
- Pick a scene or portion of a scene from the excerpt from *Peter Pan* as adapted by Douglas Irvine. See below for the excerpt web address.
- Have students work in small groups to block out different parts of the scene.
- Have the students share their blocking with the class.
- Web Address to Excerpt: http://playsforyoungaudiences.org/wp-content/files_mf/peterpan_irvine_excerpt.pdf

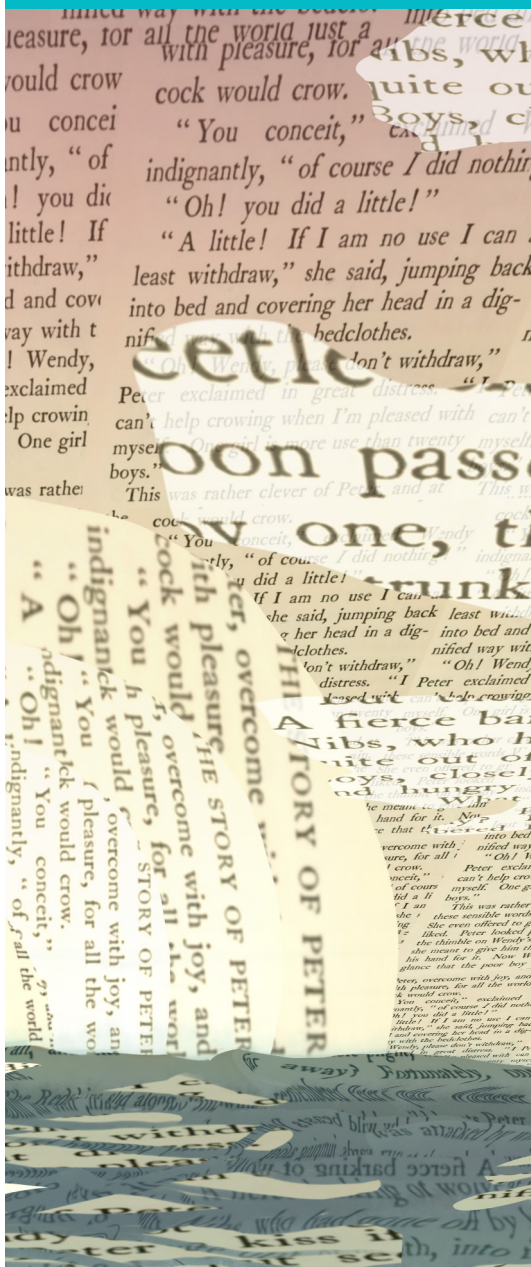




Photo credit: Trike Theatre

Reflect and Assess

Ask the following questions. Record the group's answers on the board and discuss.

- What did you notice about Trike Theatre's Peter Pan? What was the same as other versions and what was different?
- Which character is most like you? Why?
- How did the technical designs help to tell the story? Costumes? Set? Props? Lights? Sound?
- What moment in the play had the most tension? What moment in the play had the most joy?
- Why do you think Peter Pan never wants to grow up?
- Why do you think Wendy chose to grow up?
- If you were in Neverland, what would you want to do?

Learn More Online

Official website of Trike Theatre

<http://www.triketheatre.org/>

Learn more about the history of Peter Pan adaptations and cultural references

<http://www.vulture.com/2014/12/peter-pan-timeline.html>

Learn more about J.M. Barrie

<https://www.biography.com/people/jm-barrie-9200058>

Volume 16 Number 4

Colgate Classroom Series performances help students meet Arkansas Learning Standards.

Learn more at:

www.waltonartscenter.org

Walton Arts Center

Learning & Engagement

Laura Goodwin, *Vice President*

Dr. Patricia Relph, *Arts Learning Specialist*

Mallory Barker, *School Services Specialist*

Meghan Foehl, *Engagement Coordinator*

Sallie Zazal, *Learning Coordinator*

Juniper Patel, *Learning & Engagement Intern*



Find us on Facebook!

Walton Arts Center

Learning & Engagement

Walton Arts Center **2018/19 Learning programming** is **generously supported** by these funders, sponsors and benefactors:

Education Sponsors:

Colgate-Palmolive
JB Hunt
Tyson
Unilever
Saatchi & Saatchi X
Walmart

Education Grantors:

Arkansas Arts Council
Bank of America
Baum Charitable Foundation
The John F. Kennedy Center
for the Performing Arts
Walmart Foundation
The Walton Family Foundation

Education Partners:

Crystal Bridges Museum of American Art
Northwest Arkansas Education Service Cooperative
UA Center for Children & Youth

Additional support for arts education programs comes from all *Friends of Walton Arts Center*.

Become a Friend!

More than 900 *Friends of Walton Arts Center* support arts education programming with their annual support. Become a *Friend* today and help Walton Arts Center continue to serve even more students over the next year.

For more information on the *Friends of Walton Arts Center* program, please call **479.571.2784** or visit **waltonartscenter.org/donate**



Walton Arts Center